

Bühne am Lusterboden der Wiener Staatsoper

Anna Karoline Steiner

01604833

+43 650 8519853

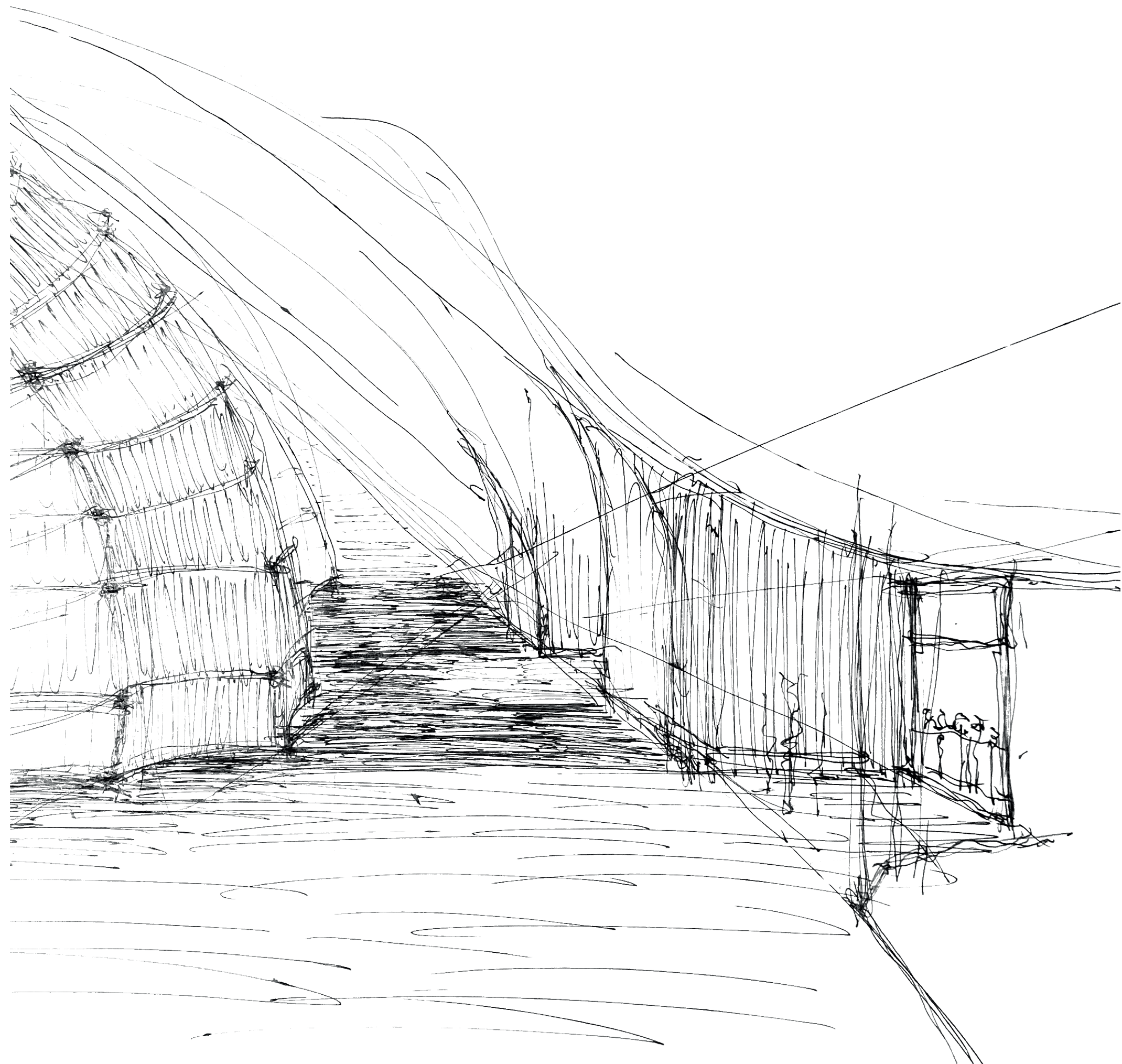
253.M39 Integratives Entwerfen Musiktheater

2024W, UE, 12.0h, 15.0EC

E253 Institut für Architektur und Entwerfen

Forschungsbereich Hochbau und Entwerfen

Betreuung: Ivica Brnić, Manuel Kainz

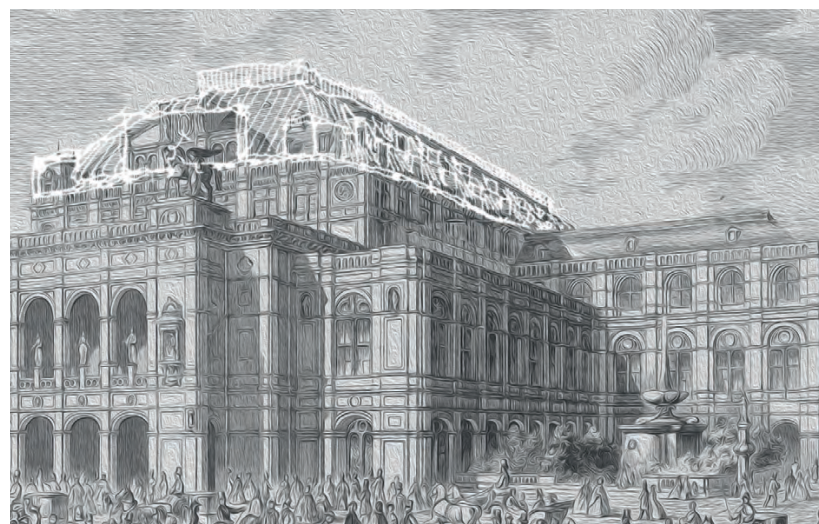




Hofoper 1861,
Van der Nüll und Siccardsburg



Staatsoper
nach der Zerstörung 1945



Staatsoper
Entwurf

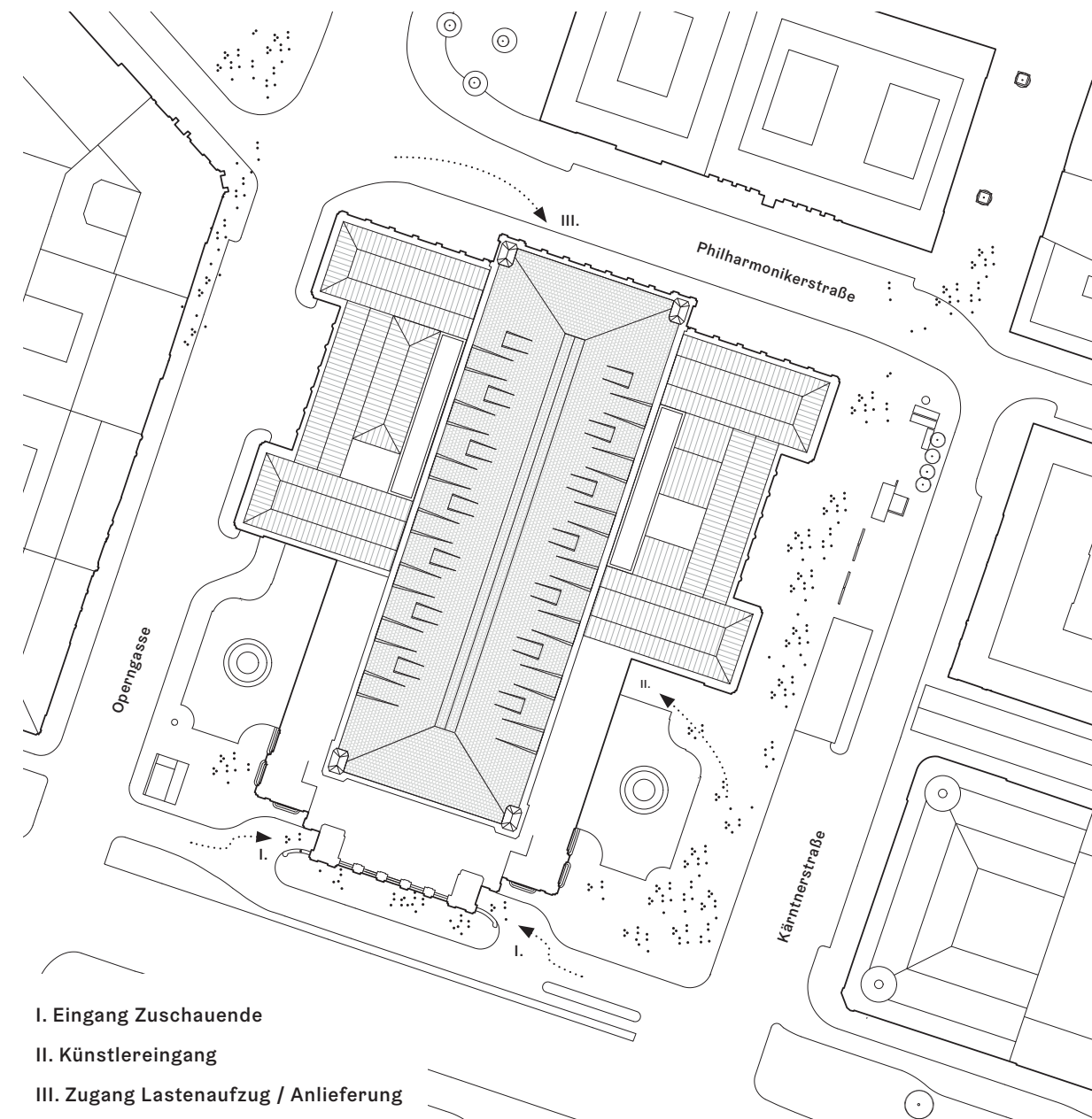


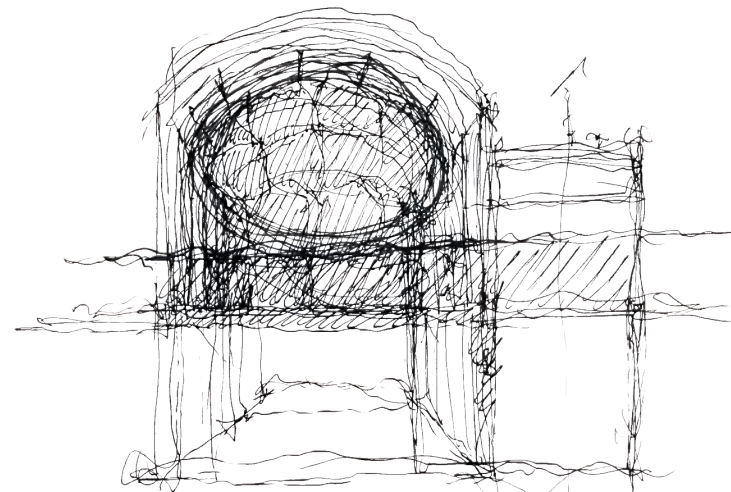
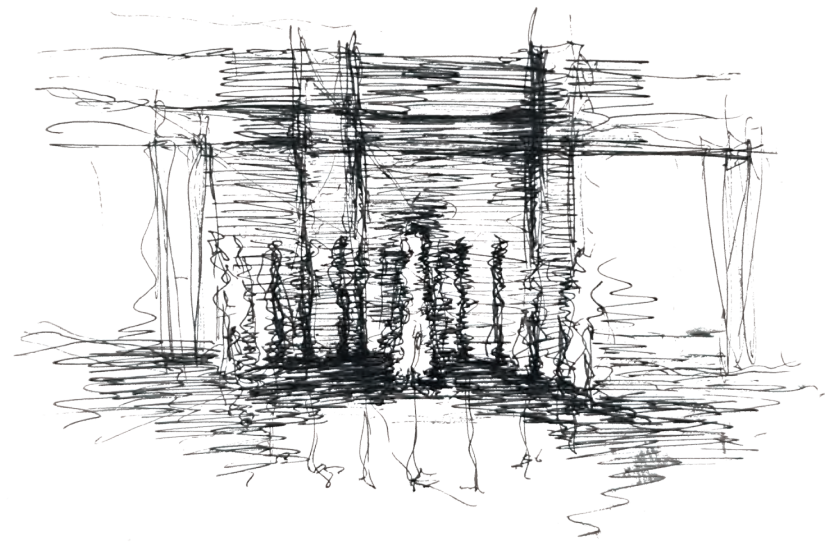
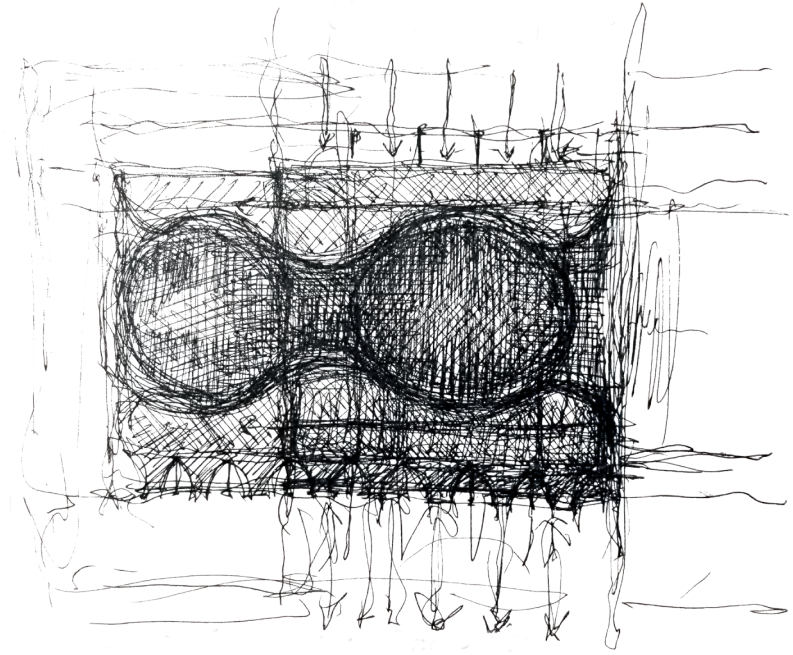
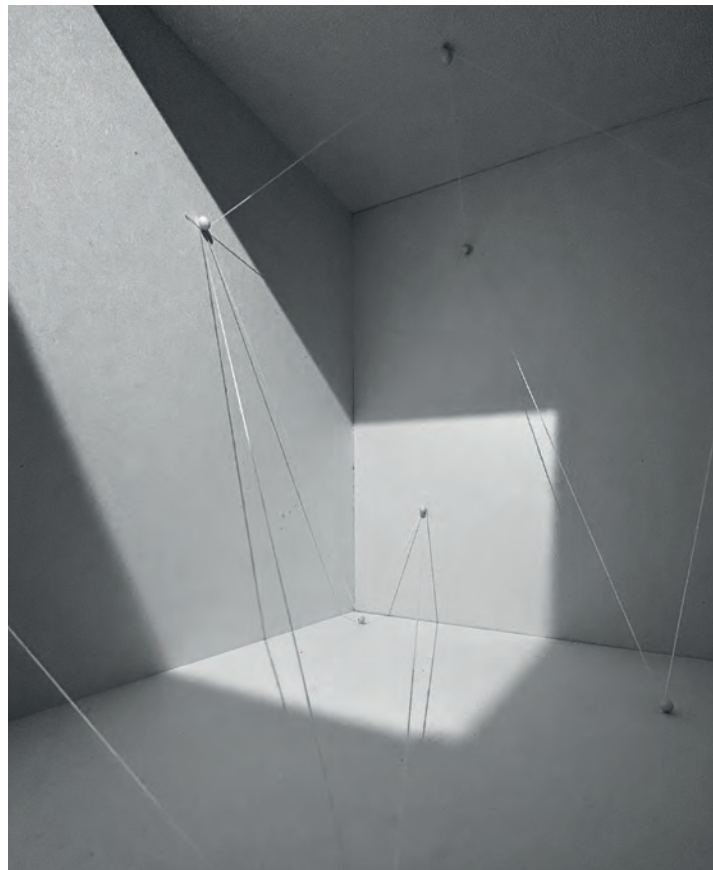
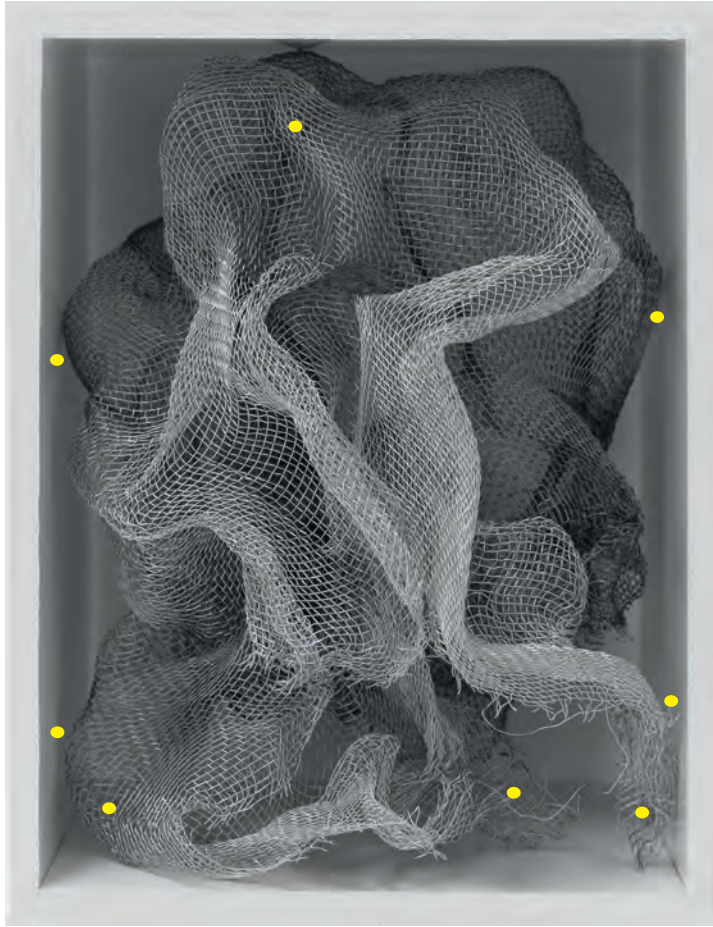
Lusterboden
der Wiener Staatsoper

Bühne am Lusterboden der Wiener Staatsoper

Anna Karoline Steiner
253.M39 Integratives Entwerfen Musiktheater
Forschungsbereich Hochbau und Entwerfen
Betreuung: Ivica Brnić, Manuel Kainz

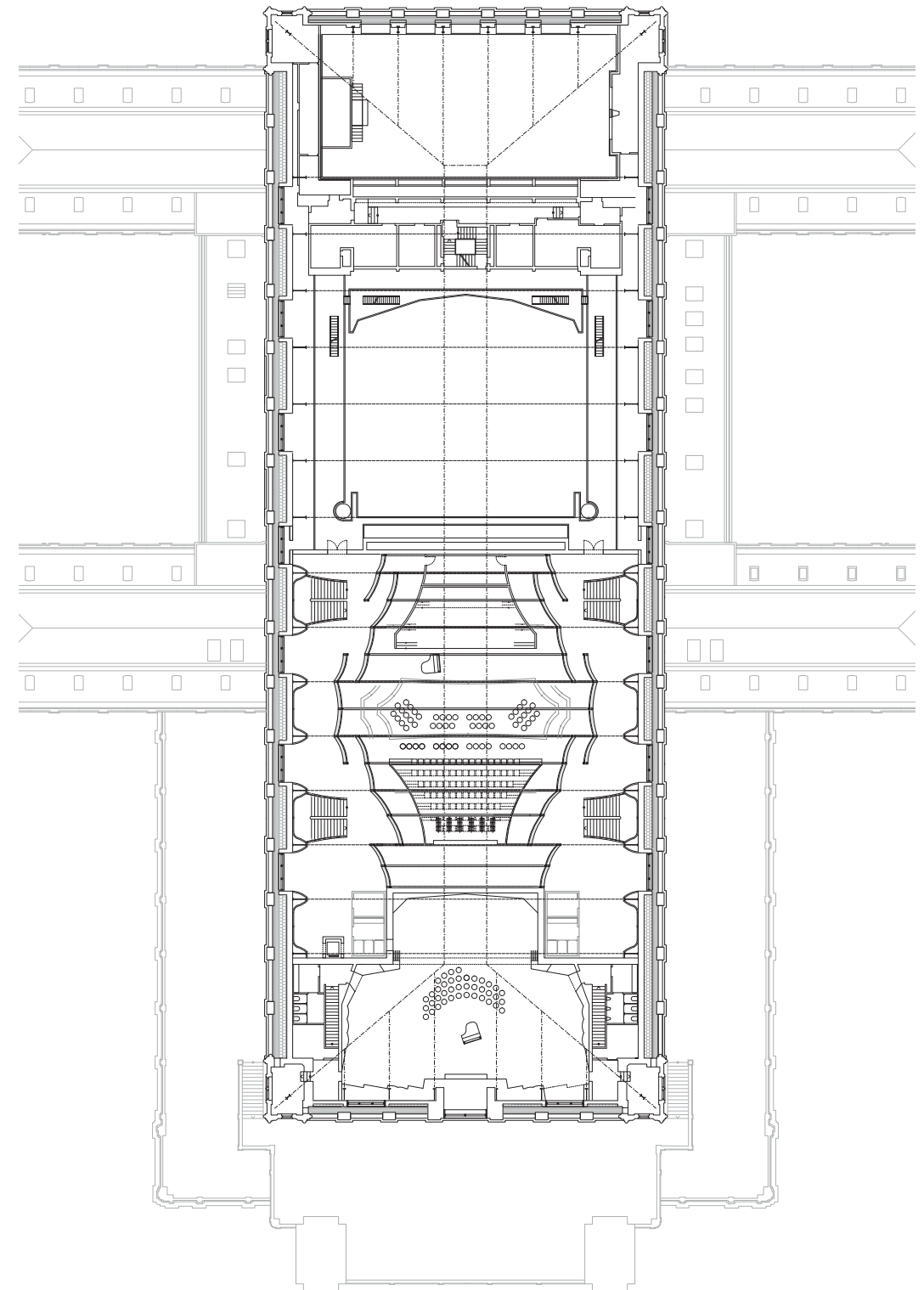
Über dem Zuschauerraum der Wiener Staatsoper dem ehemaligen Lusterboden, entsteht eine neue Bühne. Das Dach wird geöffnet, eine Verbindung zwischen Innen und Außen geschaffen, und neues Raumpotenzial entfaltet.







Raum





7

Kühlschrank

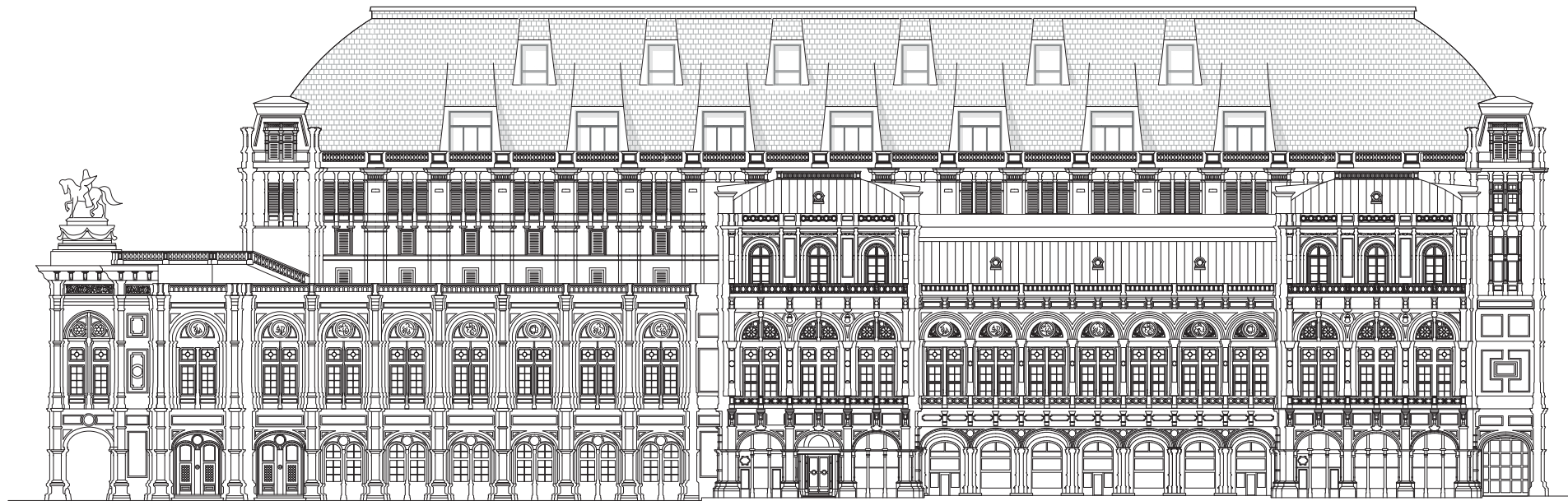
Fußgängerknofen

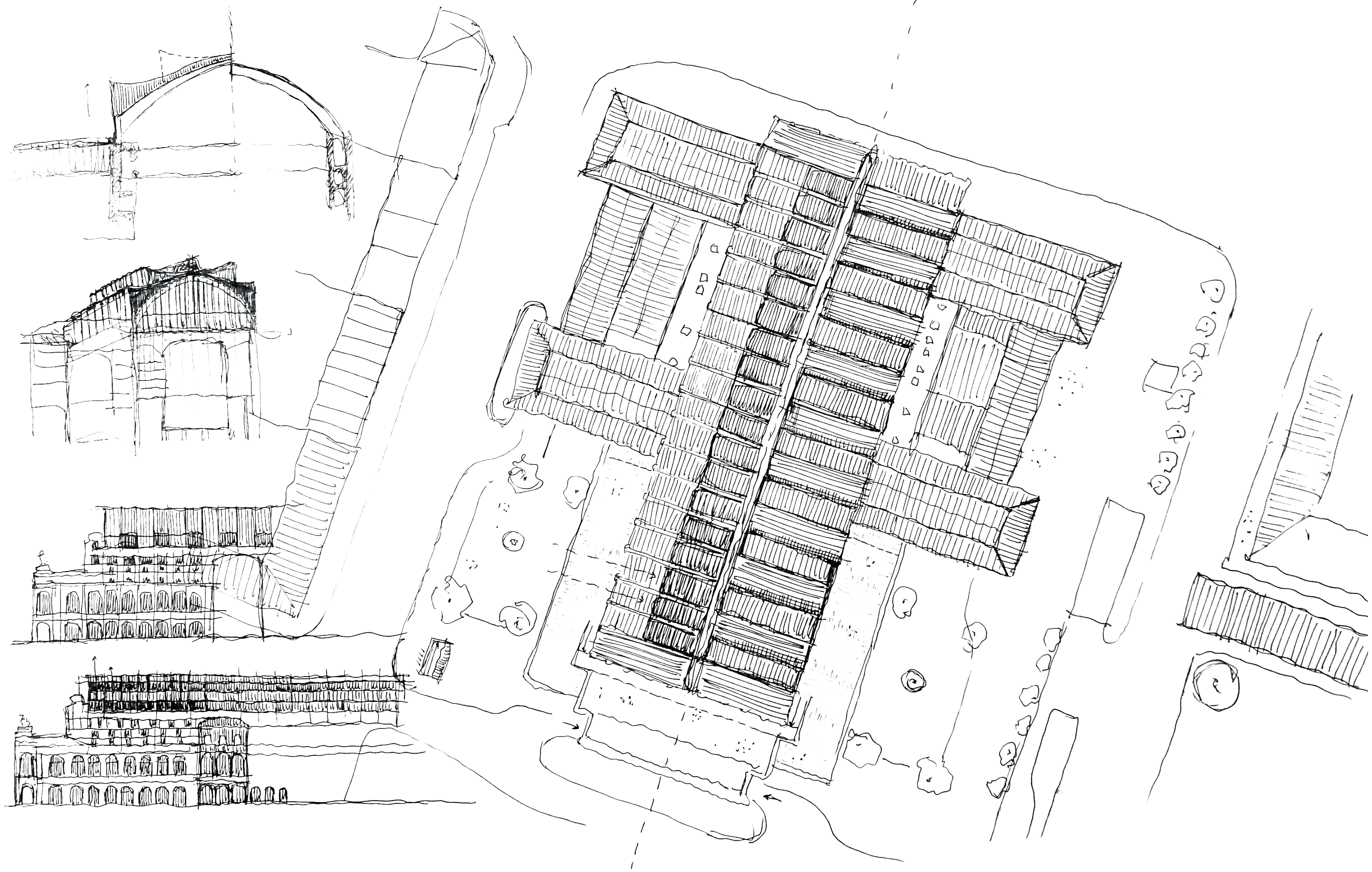
Urdür

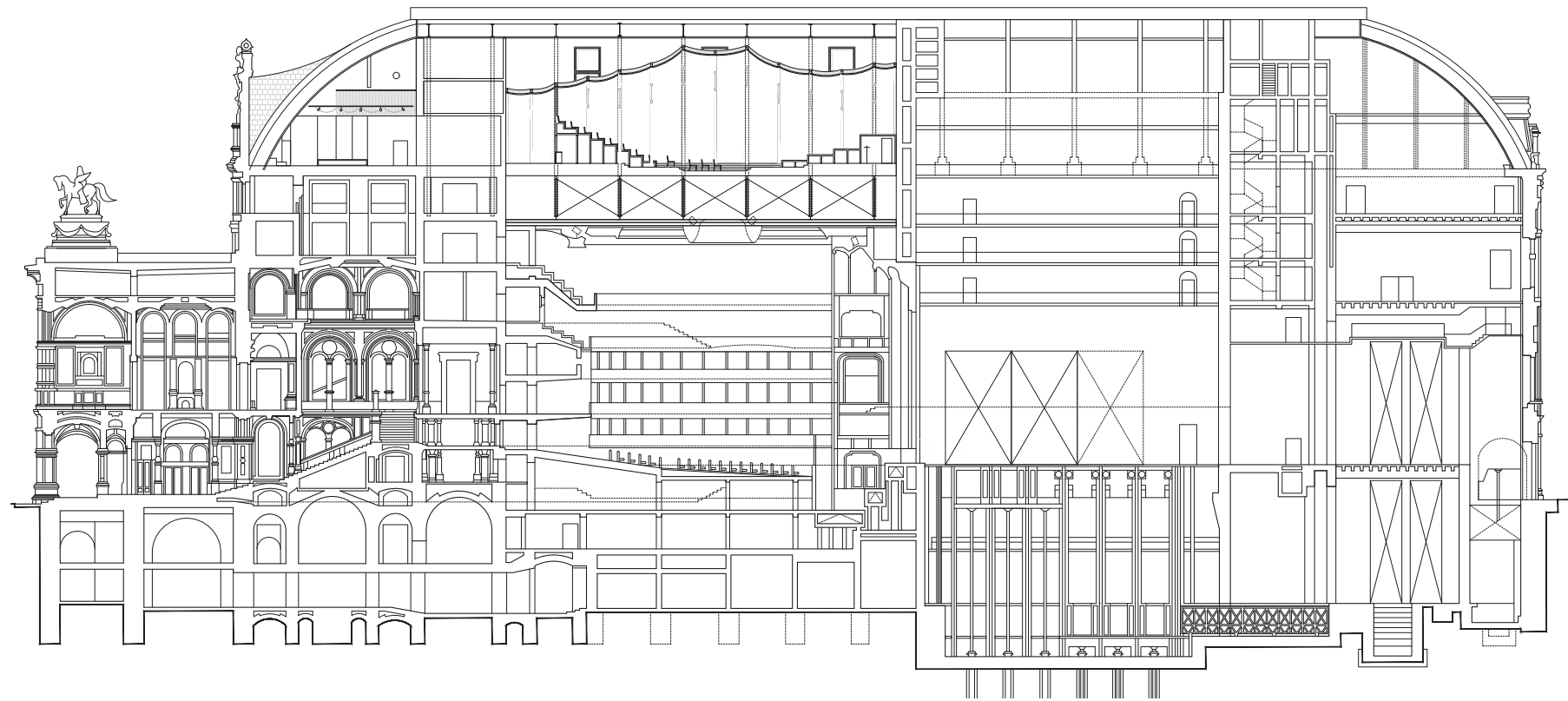
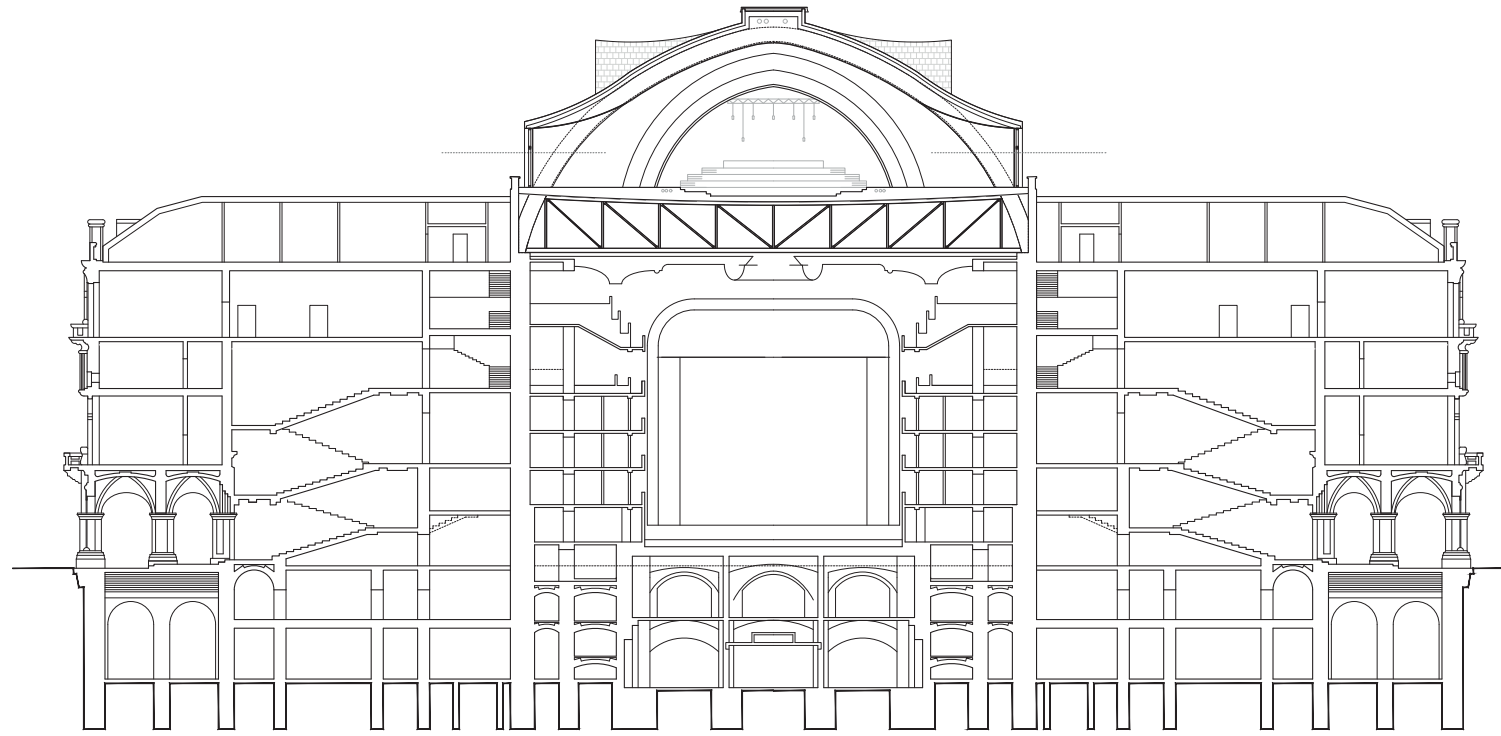
Angraben

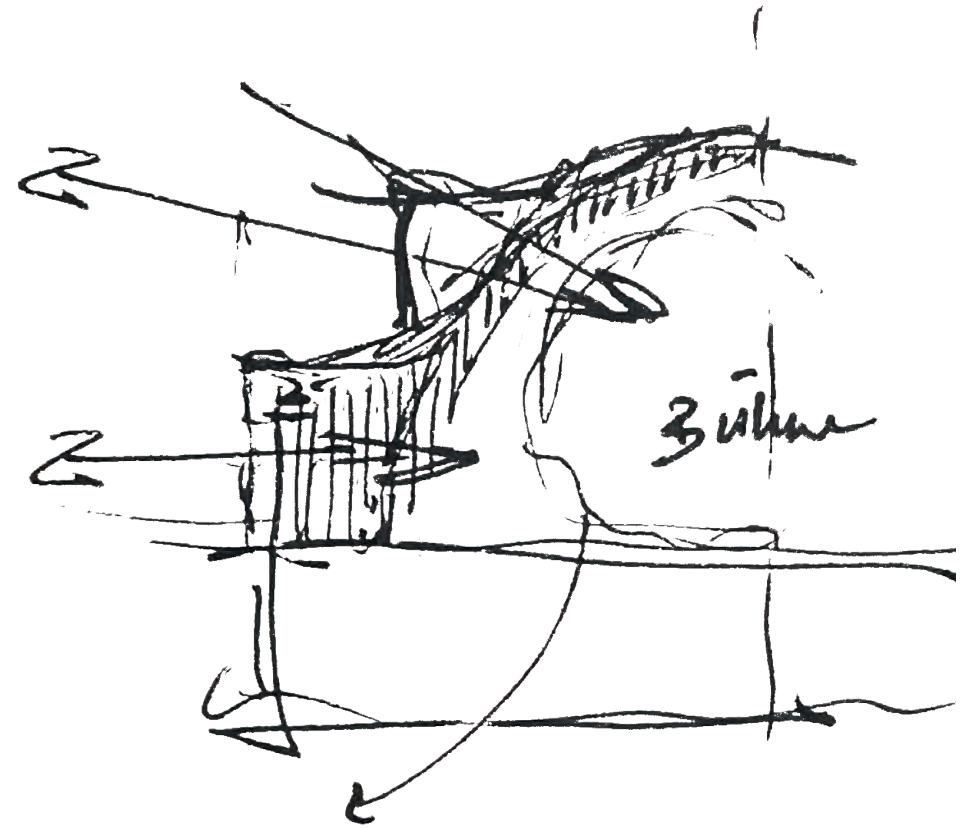
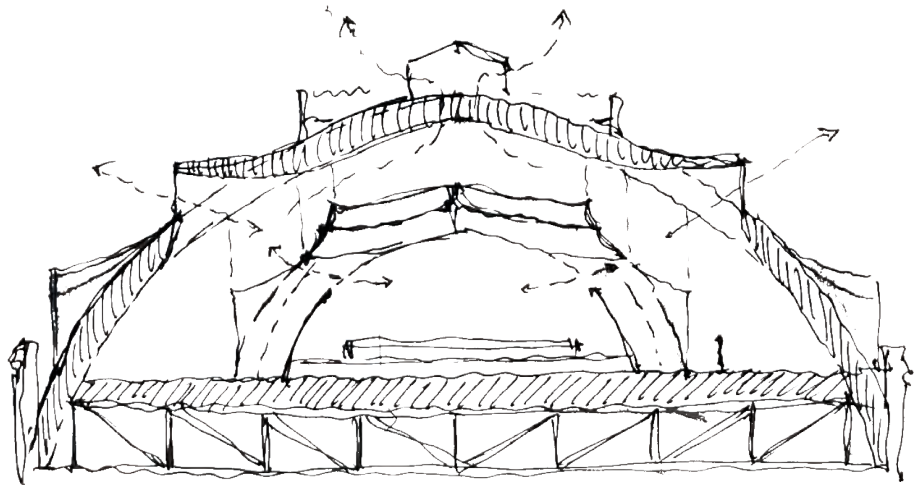
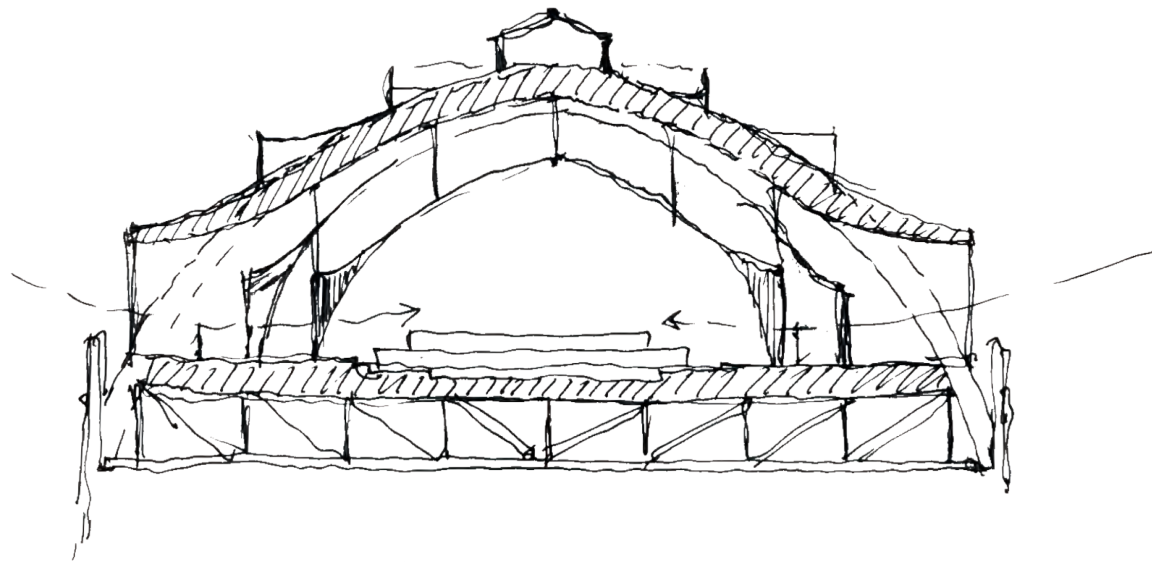
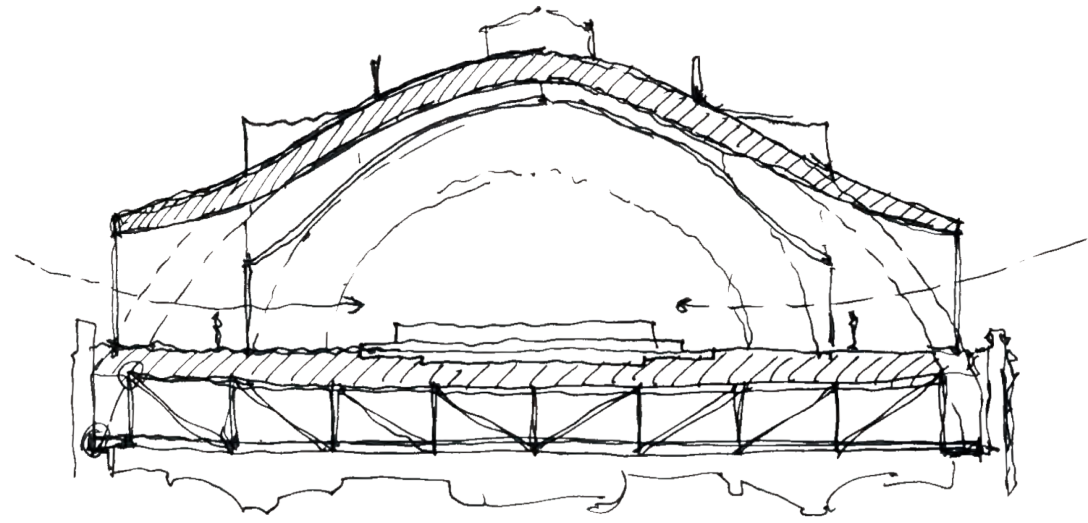
externer
Zugang durch
Vor



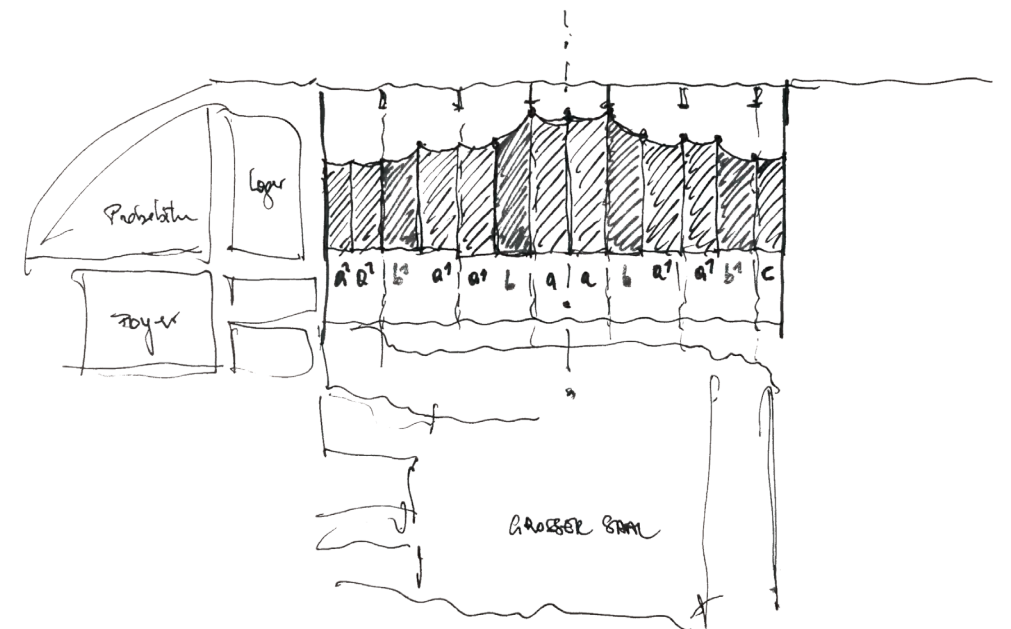
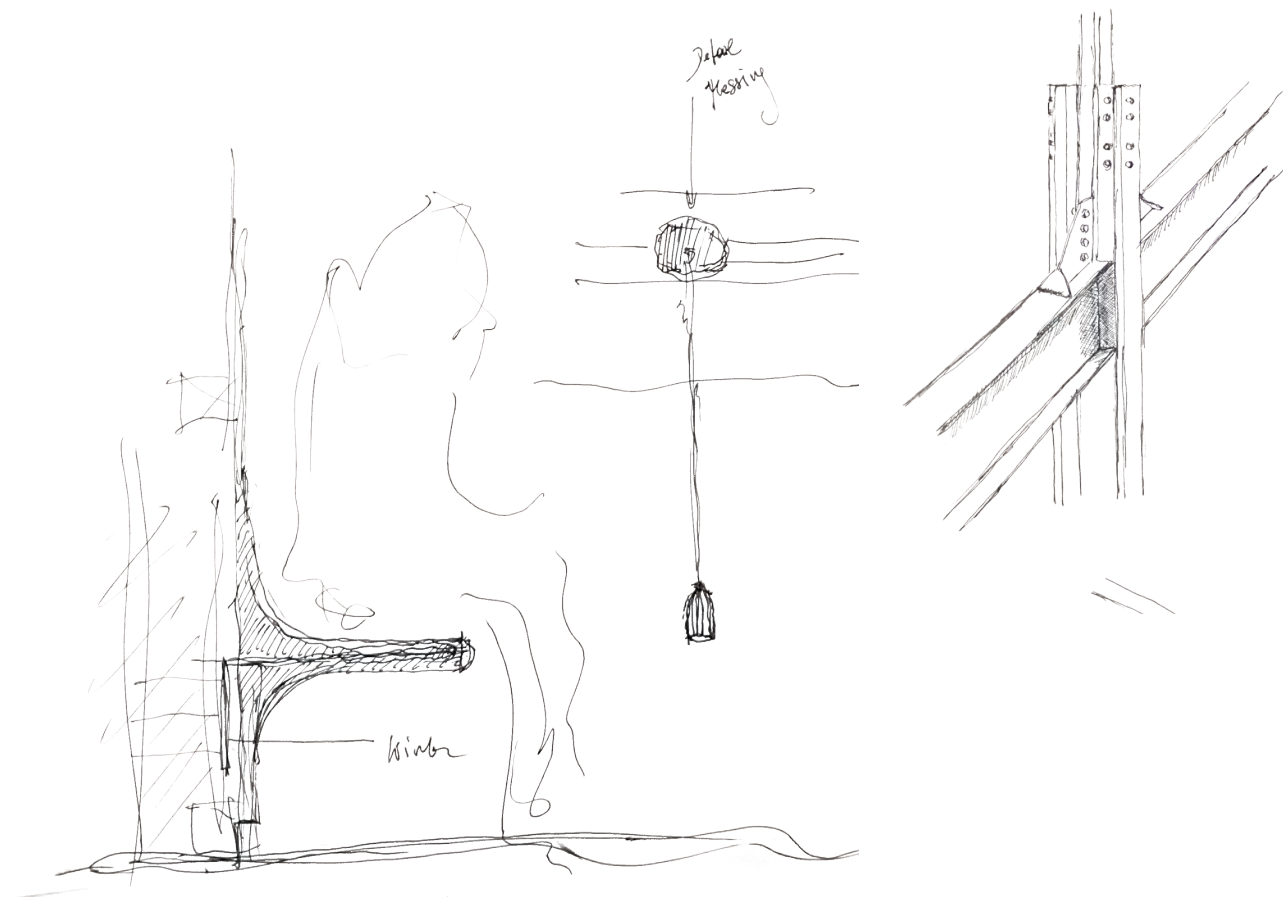
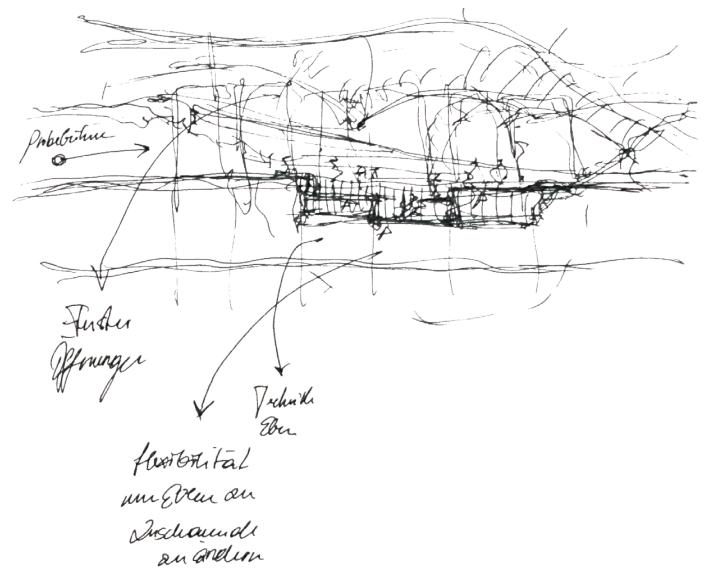
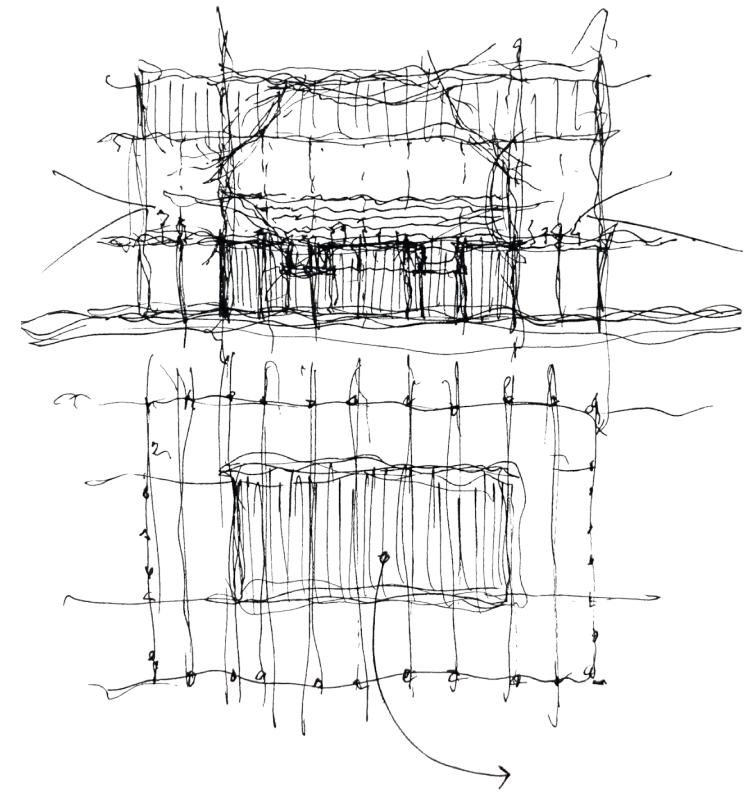
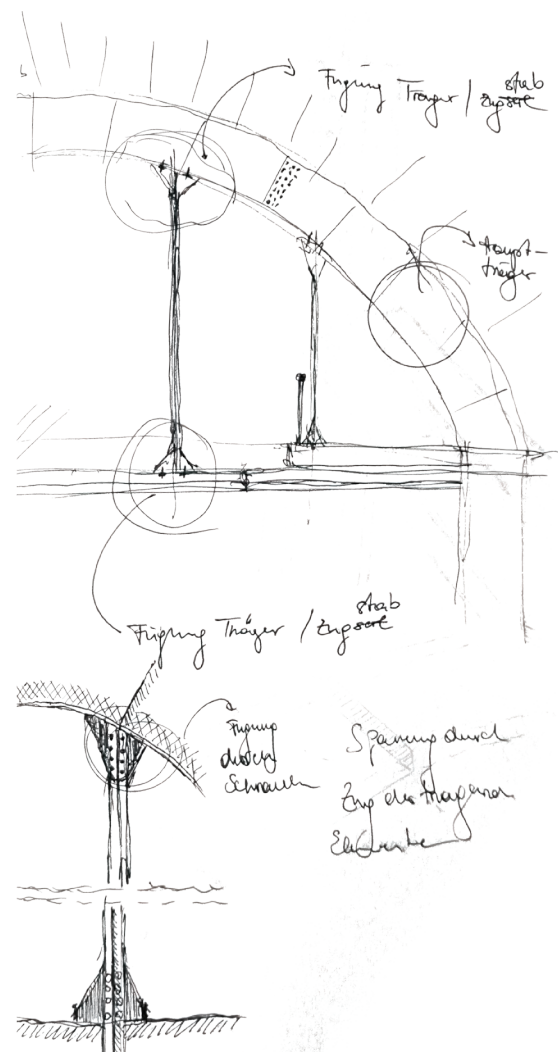
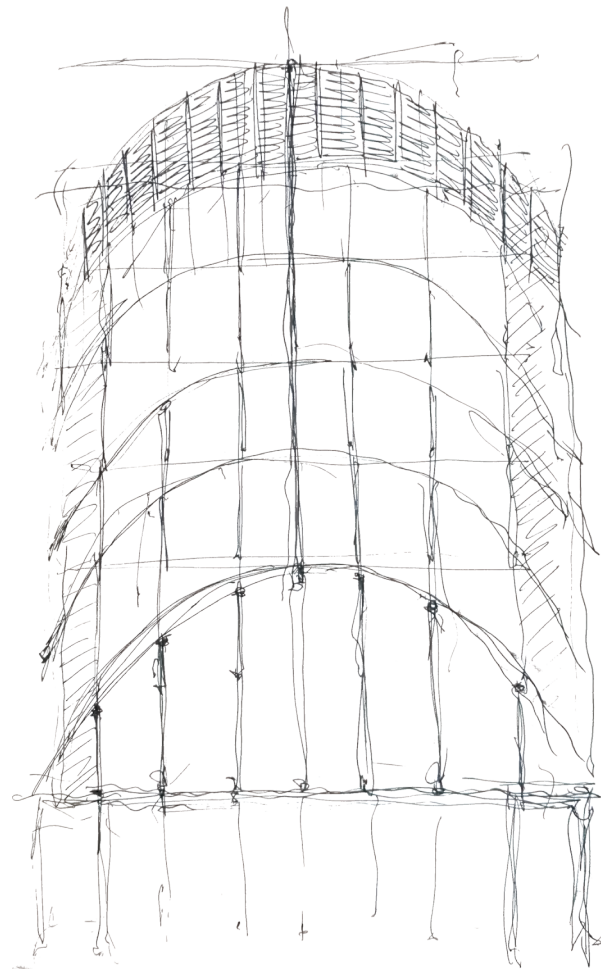














Ausdruck

